



Sample image

## Datasheet

**Article number:** 70008512  
**Designation:** CG8.A201.VE21  
**Description:** Switch

<b>IEC 60947-3 EN 60947-3, VDE 0660 Teil 107</b>						
<b>Rated insulation voltage Ui</b>						
			Voltage (V) AC / DC			
			690 AC / DC			
<b>Rated uninterrupted current Iu/Ith</b>						
Current (A)	Ambient temperature (°C)	Peak temperature (°C)	additional requirements			
20	55	60	Ambient temperature +55°C during 24 hours with peaks up to +60°C			
<b>Rated operational current Ie</b>						
Utilization category			Voltage (V)		Current (A)	
AC-15			220 - 240		6	
AC-15			380 - 440		4	
<b>Rated operational power</b>						
Utilization category	Voltage (V)	No. of phases	No. of poles	Power (kW)		
AC-3	220 - 240	3	3	3		
AC-3	380 - 440	3	3	5,50		
AC-3	660 - 690	3	3	5,50		
AC-3	220 - 240	1	2	2,20		
AC-3	380 - 440	1	2	3		
AC-23A	220 - 240	3	3	3,70		
AC-23A	380 - 440	3	3	7,50		
AC-23A	660 - 690	3	3	7,50		
AC-23A	220 - 240	1	2	2,50		
AC-23A	380 - 440	1	2	3,70		
<b>Max. Fuse rating IEC</b>						
Fuse characteristic			No. of Fuses		Current (A)	
gG			1		25	
<b>UL60947-4-1 , UL508</b>						
<b>Nominal Voltage</b>						
			Voltage (V) AC / DC			
			300 AC			
<b>Rated insulation voltage Ui</b>						
			Voltage (V) AC / DC			
			300 AC			
<b>Rated thermal current</b>						
		Current (A)	Ambient temperature (°C)		Additional Text	
		16	0 - 40		-	
<b>Horsepower rating</b>						
Across-the-Line Motor Starting		Voltage (V)	No. of phases	No. of poles	Power (HP)	Ambient temperature [°C]
Reversing		110 - 120	1	2	0,17	40
Reversing		220 - 240	1	2	0,50	40
Reversing		277 - 277	1	2	0,50	40
Reversing		110 - 120	3	3	0,50	40
Reversing		220 - 240	3	3	1	40
DOL		110 - 120	1	2	0,50	40
DOL		220 - 240	1	2	1	40
DOL		277 - 277	1	2	1	40
DOL		110 - 120	3	3	1,50	40
DOL		220 - 240	3	3	1	40
<b>Pilot duty rating code</b>						
Duty Code						
A300						
<b>SCCR / Max. fuse rating</b>						
Conditions of acceptability						
These devices are suitable for use on circuits capable of delivering not more than 5kA rms symmetrical amperes, 600V ac max. when protected by Class RK1 fuses.						
<b>Temp. rating of wire</b>						
			Temperature rating (°C)		Current (A) Text	
			60 - 75		- Use copper wire only	
<b>General Use</b>						
AC / DC	Voltage (V)	Current (A)	No. of phases	No. of poles	No. of contacts in series	
AC	150	16	1	2	1	

General Use								
AC / DC	Voltage (V)	Current (A)	No. of phases	No. of poles	No. of contacts in series			
AC	150	16	3	3	1			
AC	300	10	1	2	1			
AC	300	10	3	3	1			
CSA								
Nominal Voltage								
				Voltage (V) AC / DC				
				300 AC				
Rated insulation voltage Ui								
				Voltage (V) AC / DC				
				300 AC				
Rated thermal current								
		Current (A)	Ambient temperature (°C)		Additional Text			
		16	0 - 40		--			
Horsepower rating								
Across-the-Line Motor Starting				Voltage (V)	No. of phases	No. of poles	Power (HP)	Ambient temperature [°C]
DOL				110 - 120	1	2	0,50	40
DOL				220 - 240	1	2	1	40
DOL				277 - 277	1	2	2	40
DOL				110 - 120	3	3	1,50	40
DOL				220 - 240	3	3	3	40
Pilot duty rating code								
Duty Code								
A300								
SCCR / Max. fuse rating								
Conditions of acceptability								
These devices are suitable for use on circuits capable of delivering not more than 5kA rms symmetrical amperes, 600V ac max. when protected by Class RK1 fuses.								
Temp. rating of wire								
			Temperature rating (°C)	Current (A) Text				
			75	-- --				
General Use								
AC / DC	Voltage (V)	Current (A)	No. of phases	No. of poles	No. of contacts in series			
AC	150	16	1	1	1			
AC	300	10	1	1	1			
AC	300	10	3	3	1			
GENERAL TECHNICAL INFORMATION								
Size of conductor								
composition of conductor	Min. / Max. value		No. of conductor per terminal	Cross section (mm <sup>2</sup> ) or (AWG/kcmil)		Material of the wire		
Solid wire	Min.			1	0.5mm <sup>2</sup>	Copper		
Solid wire	Min.			2	0.5mm <sup>2</sup>	Copper		
Flexible wire	Min.			1	0.75mm <sup>2</sup>	Copper		
Flexible wire	Min.			2	0.75mm <sup>2</sup>	Copper		
Flexible wire	Max.			2	2.5mm <sup>2</sup>	Copper		
Flexible wire	Max.			2	AWG 14	Copper		
Single-core or stranded wire	Max.			2	AWG 12	Copper		
Single-core or stranded wire	Max.			2	2.5mm <sup>2</sup>	Copper		
Flexible wire with ferrule according to DIN 46228	Min.			1	0.5mm <sup>2</sup>	Copper		
Flexible wire with ferrule according to DIN 46228	Max.			2	2.5mm <sup>2</sup>	Copper		
Flexible wire with ferrule according to DIN 46228	Min.			2	0.5mm <sup>2</sup>	Copper		
Stripping length								
				Length (mm) --				
								
Recommended screw driver								
Type of screw driver				Value				
Cross Screwdriver				PH1				
Slot screwdriver according to DIN 5264				0,8x4				
Tightening torque of screws								
				tightening torque (Nm)	tightening torque (lb-in)			
				0,60	5			
Approbations								
Specification						Marking		
CE marking								
UK Directives								
CSA C.22.2 No.14								
General Information								
Text								
- Use only copper wires with or without tinned/silver-plated individual wires. Soldering the end of the wire before wiring is not allowed.								
- Terminals with factory fitted jumper links are tightened during production for loss prevention. When opening the terminal clamps, make sure that no factory fitted links get lost and that all wire connections are properly seated.								
- After wiring, ALL terminal screws must be tightened to the specified torque values.								

### General Information

#### Text

- The protection class of the selected mounting type may vary if optional extras are used.
- Do not lubricate or treat contacts.
- Switches may only be mounted, connected and set into operation by qualified persons according to the accepted rules of technology.
- After installation of the switches the spacings between the terminals must be sufficient to fulfill the requirement of the applicable standards.

### Waste Electrical & Electronic Equipment (WEEE)

#### Picture name

#### Description



Do not throw in the trash as care must be taken to ensure environmentally sound disposal and recycling. Please either use an environmentally friendly waste disposal company; return to the supplier for disposal; or return direct to the manufacturer, Kraus & Naimer. You can find local Kraus & Naimer offices at [www.krausnaimer.com](http://www.krausnaimer.com)

### Proposition 65

#### Picture name

#### Description



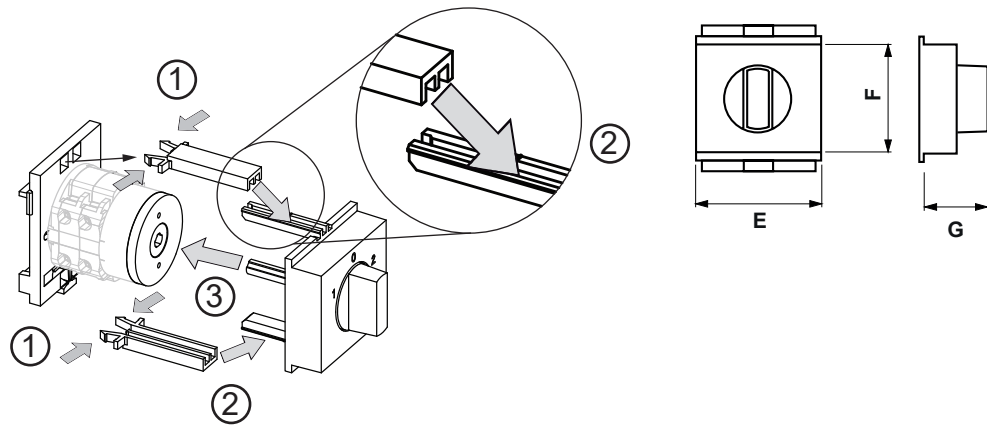
WARNING: This product can expose you to chemicals including nickel and lead, which is known to the State of California to cause cancer. For more information go to [www.P65Warnings.ca.gov](http://www.P65Warnings.ca.gov).

Classification Contact: Rigid contact bridge

Classification Contact Mat: Silver

Classification Terminal: Screw terminal

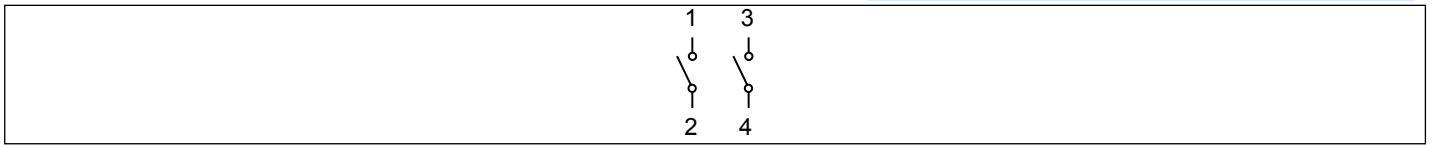
### Mounting-VE21



IP - Code front side	IP00
Stages	1,00 - 4,00
E	H 52,30 mm
F	H 45,00 mm
G	H 26,50 mm


## Wiring diagram

CG8.A201.VE21

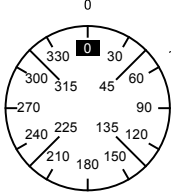
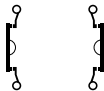


# Switch program

CG8.A201.VE21



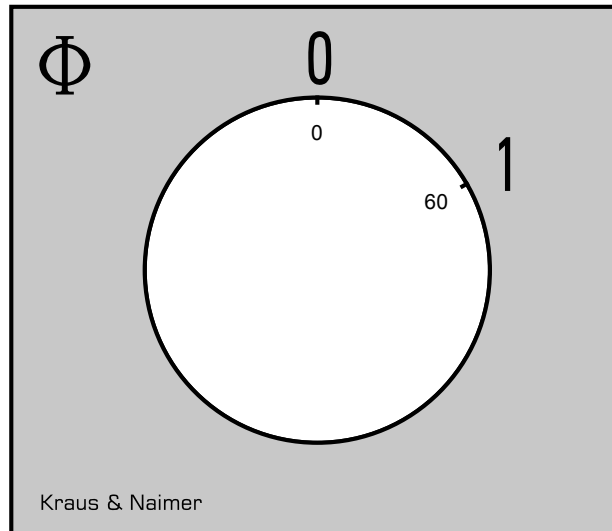
CG8    A201    VE    Page 1 of 1

Face Plate	1	3	5	7	9	11	13	15	17	19	21	23	
													
Switching Angle <input type="text" value="60"/> Total switching Angle <input type="text" value="60"/>	2	4	6	8	10	12	14	16	18	20	22	24	
0													
15													
30													
45													
60													
75													
90													
105													
120													
135													
150													
165													
180													
195													
210													
225													
240													
255													
270													
285													
300													
315													
330													
345													
							Jumpers						
							1 ●	● 3	4 ●				● 2
							5 ○	○ 7	8 ○				○ 6
							9 ○	○ 11	12 ○				○ 10
							13 ○	○ 15	16 ○				○ 14
							17 ○	○ 19	20 ○				○ 18
							21 ○	○ 23	24 ○				○ 22
							25 ○	○ 27	28 ○				○ 26
							29 ○	○ 31	32 ○				○ 30
							33 ○	○ 35	36 ○				○ 34
							37 ○	○ 39	40 ○				○ 38
							41 ○	○ 43	44 ○				○ 42
							45 ○	○ 47	48 ○				○ 46

Version: 123

**Face plate**

S0.F070/C10.VE21



## HANDLES

**Designation:** SOC.G597

**Handle colour:** "7" electro grey

### GENERAL TECHNICAL INFORMATION

#### Recommended screw driver

Type of screw driver	Value
Cross Screwdriver	PH1
Slot screwdriver according to DIN 5264	0,8x4