



Sample image

Datasheet

Article number: 70009703

Designation: CG8.A048.E

Description: Switch

IEC 60947-3 EN 60947-3, VDE 0660 Teil 107						
Rated insulation voltage Ui						
			Voltage (V) AC / DC			
			690 AC / DC			
Rated uninterrupted current Iu/Ith						
Current (A)	Ambient temperature (°C)		Peak temperature (°C)		additional requirements	
20	55		60		Ambient temperature +55°C during 24 hours with peaks up to +60°C	
Rated operational current Ie						
Utilization category			Voltage (V)		Current (A)	
AC-15			220 - 240		6	
AC-15			380 - 440		4	
Rated operational power						
Utilization category	Voltage (V)	No. of phases		No. of poles		Power (kW)
AC-3	220 - 240	3		3		3
AC-3	380 - 440	3		3		5,50
AC-3	660 - 690	3		3		5,50
AC-3	220 - 240	1		2		2,20
AC-3	380 - 440	1		2		3
AC-23A	220 - 240	3		3		3,70
AC-23A	380 - 440	3		3		7,50
AC-23A	660 - 690	3		3		7,50
AC-23A	220 - 240	1		2		2,50
AC-23A	380 - 440	1		2		3,70
Max. Fuse rating IEC						
Fuse characteristic			No. of Fuses		Current (A)	
gG			1		25	
UL60947-4-1 , UL508						
Nominal Voltage						
			Voltage (V) AC / DC			
			300 AC			
Rated insulation voltage Ui						
			Voltage (V) AC / DC			
			300 AC			
Rated thermal current						
		Current (A)	Ambient temperature (°C)		Additional Text	
		16	0 - 40		-	
Horsepower rating						
<i>Across-the-Line Motor Starting</i>		Voltage (V)	No. of phases	No. of poles	Power (HP)	Ambient temperature [°C]
Reversing		110 - 120	1	2	0,17	40
Reversing		220 - 240	1	2	0,50	40
Reversing		277 - 277	1	2	0,50	40
Reversing		110 - 120	3	3	0,50	40
Reversing		220 - 240	3	3	1	40
DOL		110 - 120	1	2	0,50	40
DOL		220 - 240	1	2	1	40
DOL		277 - 277	1	2	1	40
DOL		110 - 120	3	3	1,50	40
DOL		220 - 240	3	3	1	40
Pilot duty rating code						
Duty Code						
A300						
SCCR / Max. fuse rating						
Conditions of acceptability						
These devices are suitable for use on circuits capable of delivering not more than 5kA rms symmetrical amperes, 600V ac max. when protected by Class RK1 fuses.						
Temp. rating of wire						
			Temperature rating (°C)		Current (A) Text	
			60 - 75		- Use copper wire only	
General Use						
AC / DC	Voltage (V)	Current (A)	No. of phases	No. of poles	No. of contacts in series	
AC	150	16	1	2	1	

General Use						
AC / DC	Voltage (V)	Current (A)	No. of phases	No. of poles	No. of contacts in series	
AC	150	16	3	3	1	
AC	300	10	1	2	1	
AC	300	10	3	3	1	
CSA						
Nominal Voltage						
Voltage (V) AC / DC						
300 AC						
Rated insulation voltage Ui						
Voltage (V) AC / DC						
300 AC						
Rated thermal current						
Current (A)		Ambient temperature (°C) Additional Text				
16		0 - 40 --				
Horsepower rating						
Across-the-Line Motor Starting	Voltage (V)	No. of phases	No. of poles	Power (HP)	Ambient temperature [°C]	
DOL	110 - 120	1	2	0,50	40	
DOL	220 - 240	1	2	1	40	
DOL	277 - 277	1	2	2	40	
DOL	110 - 120	3	3	1,50	40	
DOL	220 - 240	3	3	3	40	
Pilot duty rating code						
Duty Code						
A300						
SCCR / Max. fuse rating						
Conditions of acceptability						
These devices are suitable for use on circuits capable of delivering not more than 5kA rms symmetrical amperes, 600V ac max. when protected by Class RK1 fuses.						
Temp. rating of wire						
Temperature rating (°C)		Current (A) Text				
75		-- --				
General Use						
AC / DC	Voltage (V)	Current (A)	No. of phases	No. of poles	No. of contacts in series	
AC	150	16	1	1	1	
AC	300	10	1	1	1	
AC	300	10	3	3	1	
GENERAL TECHNICAL INFORMATION						
Size of conductor						
composition of conductor	Min. / Max. value	No. of conductor per terminal	Cross section (mm ²) or (AWG/kcmil)		Material of the wire	
Solid wire	Min.		1	0.5mm ²	Copper	
Solid wire	Min.		2	0.5mm ²	Copper	
Flexible wire	Min.		1	0.75mm ²	Copper	
Flexible wire	Min.		2	0.75mm ²	Copper	
Flexible wire	Max.		2	2.5mm ²	Copper	
Flexible wire	Max.		2	AWG 14	Copper	
Single-core or stranded wire	Max.		2	AWG 12	Copper	
Single-core or stranded wire	Max.		2	2.5mm ²	Copper	
Flexible wire with ferrule according to DIN 46228	Min.		1	0.5mm ²	Copper	
Flexible wire with ferrule according to DIN 46228	Max.		2	2.5mm ²	Copper	
Flexible wire with ferrule according to DIN 46228	Min.		2	0.5mm ²	Copper	
Stripping length						
Length (mm) --						
						
Recommended screw driver						
Type of screw driver			Value			
Cross Screwdriver			PH1			
Slot screwdriver according to DIN 5264			0,8x4			
Tightening torque of screws						
tightening torque (Nm)			tightening torque (lb-in)			
0,60			5			
Approbations						
Specification					Marking	
EAC						
CE marking						
UK Directives						
CSA C.22.2 No.14						
GB/T14048.3						

General Information

Text

- Use only copper wires with or without tinned/silver-plated individual wires. Soldering the end of the wire before wiring is not allowed.
- Terminals with factory fitted jumper links are tightened during production for loss prevention. When opening the terminal clamps, make sure that no factory fitted links get lost and that all wire connections are properly seated.
- After wiring, ALL terminal screws must be tightened to the specified torque values.
- The protection class of the selected mounting type may vary if optional extras are used.
- Do not lubricate or treat contacts.
- Switches may only be mounted, connected and set into operation by qualified persons according to the accepted rules of technology.
- After installation of the switches the spacings between the terminals must be sufficient to fulfill the requirement of the applicable standards.

Waste Electrical & Electronic Equipment (WEEE)

Picture name

Description



Do not throw in the trash as care must be taken to ensure environmentally sound disposal and recycling. Please either use an environmentally friendly waste disposal company; return to the supplier for disposal; or return direct to the manufacturer, Kraus & Naimer. You can find local Kraus & Naimer offices at www.krausnaimer.com

Proposition 65

Picture name

Description



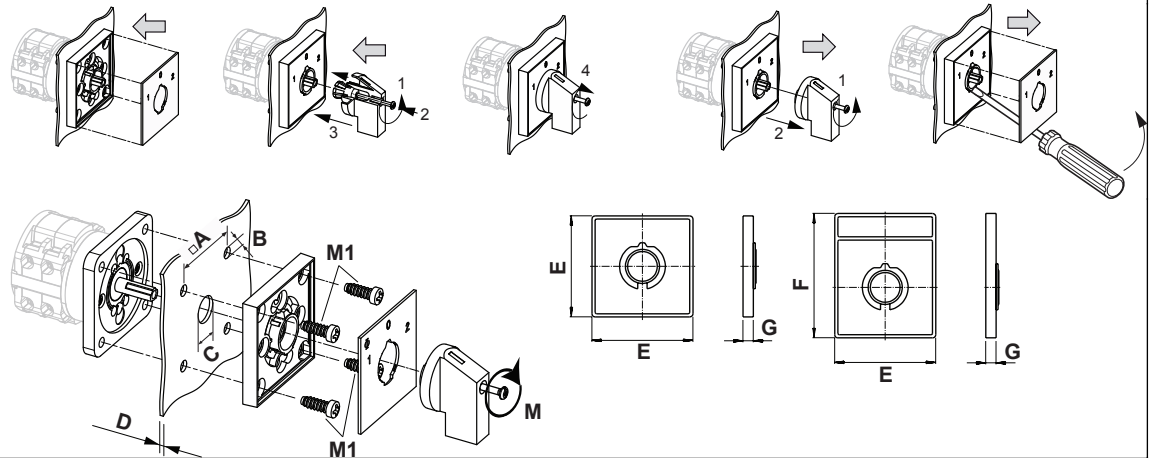
WARNING: This product can expose you to chemicals including nickel and lead, which is known to the State of California to cause cancer. For more information go to www.P65Warnings.ca.gov.

Classification Contact: Rigid contact bridge

Classification Contact Mat: Silver

Classification Terminal: Screw terminal

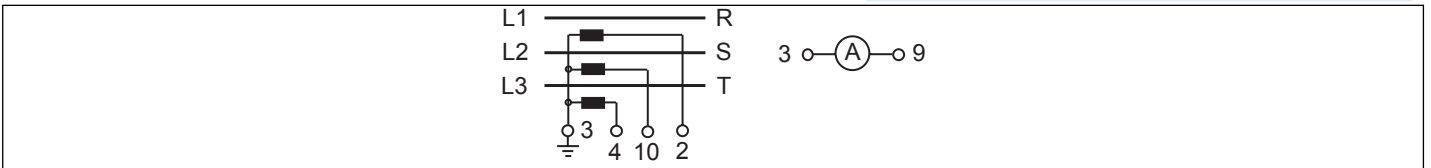
Mounting-E



IP - Code front side		IP40
Stages		1,00 - 12,00
A	□	36,00 mm
B	∅	5,00 mm
C	∅	8,00 - 19,00 mm
D	H	<= 4,00 mm
E	H	48,00 mm
F	H	59,00 mm
G	H	6,70 mm
M	⌘	0,50 Nm
M1	⌘	0,90 Nm


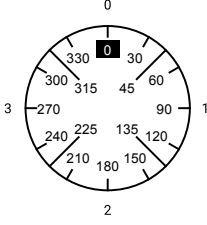
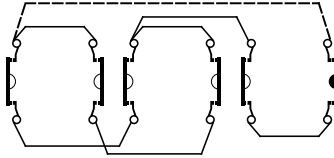
Wiring diagram

CG8.A048.E



Switch program

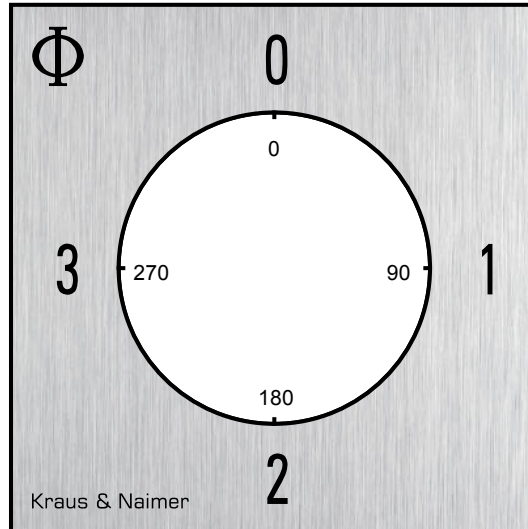
CG8.A048.E

 Kraus & Naimer		CG8		A048		E		Page 1 of 1					
		Face Plate		1	3	5	7	9	11	13	15	17	19
													
Switching Angle <input type="text" value="90"/> Total switching Angle <input type="text" value="360"/>		2	4	6	8	10	12	14	16	18	20	22	24
0	0	█	█				█						
	15												
	30												
	45												
	60	█		█									
	75												
1	90												
	105												
	120	█		█									
	135												
	150						█		█				
	165												
2	180												
	195												
	210												
	225												
	240	█		█									
	255												
3	270												
	285												
	300		█		█								
	315												
	330												
	345												

Version: 44

Face plate

S0.F059/A1B.PEL



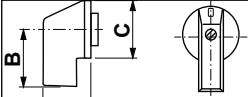
HANDLES

Designation: SOC.G251
Handle colour: "1" black

GENERAL TECHNICAL INFORMATION

Recommended screw driver

Type of screw driver	Value
Cross Screwdriver	PH1
Slot screwdriver according to DIN 5264	0,8x4



A	22,00 mm	B	23,80 mm	C	27,60 mm
---	----------	---	----------	---	----------