



Sample image

Datasheet

Article number: 70009703

Description: Other Component

| IEC 60947-3 EN 60947-3, VDE 0660 Teil 107 | | | | | | |
|---|-----------|--------------------------------------|-------------------------|---------|---------------------------|--------------------------|
| 定格絶縁電圧 U_i | | | | | | |
| | | | 電圧 (V) AC / DC | | | |
| | | | 690 AC / DC | | | |
| 定格連続通電電流 I_u/I_{th} | | | | | | |
| Current (A) | 周囲温度 (°C) | ピーク温度 (°C) 追加要求事項 | | | | |
| 20 | 55 | 60 周囲温度 +55°C、24 時間、ただし瞬時ピーク温度 +60°C | | | | |
| 定格操作電流 I_e | | | | | | |
| 負荷種別 | | 電圧 (V) | | | Current (A) | |
| AC-15 | | 220 - 240 | | | 6 | |
| AC-15 | | 380 - 440 | | | 4 | |
| 定格操作電力 | | | | | | |
| 負荷種別 | 電圧 (V) | 相数 | 極数 | 電力 (kW) | | |
| AC-3 | 220 - 240 | 3 | 3 | 3 | | |
| AC-3 | 380 - 440 | 3 | 3 | 5,50 | | |
| AC-3 | 660 - 690 | 3 | 3 | 5,50 | | |
| AC-3 | 220 - 240 | 1 | 2 | 2,20 | | |
| AC-3 | 380 - 440 | 1 | 2 | 3 | | |
| AC-23A | 220 - 240 | 3 | 3 | 3,70 | | |
| AC-23A | 380 - 440 | 3 | 3 | 7,50 | | |
| AC-23A | 660 - 690 | 3 | 3 | 7,50 | | |
| AC-23A | 220 - 240 | 1 | 2 | 2,50 | | |
| AC-23A | 380 - 440 | 1 | 2 | 3,70 | | |
| 最大ヒューズ定格 IEC | | | | | | |
| ヒューズ特性 | | ヒューズ数 | | | Current (A) | |
| gG | | 1 | | | 25 | |
| UL60947-4-1, UL508 | | | | | | |
| Nominal Voltage | | | | | | |
| | | | 電圧 (V) AC / DC | | | |
| | | | 300 AC | | | |
| 定格絶縁電圧 U_i | | | | | | |
| | | | 電圧 (V) AC / DC | | | |
| | | | 300 AC | | | |
| 定格熱電流 | | | | | | |
| Current (A) | | 周囲温度 (°C) 備考 | | | | |
| 16 | | 0 - 40 -- | | | | |
| Horsepower rating | | | | | | |
| Across-the-Line Motor Starting | | 電圧 (V) | 相数 | 極数 | Power (HP) | Ambient temperature [°C] |
| Reversing | | 110 - 120 | 1 | 2 | 0,17 | 40 |
| Reversing | | 220 - 240 | 1 | 2 | 0,50 | 40 |
| Reversing | | 277 - 277 | 1 | 2 | 0,50 | 40 |
| Reversing | | 110 - 120 | 3 | 3 | 0,50 | 40 |
| Reversing | | 220 - 240 | 3 | 3 | 1 | 40 |
| DOL | | 110 - 120 | 1 | 2 | 0,50 | 40 |
| DOL | | 220 - 240 | 1 | 2 | 1 | 40 |
| DOL | | 277 - 277 | 1 | 2 | 1 | 40 |
| DOL | | 110 - 120 | 3 | 3 | 1,50 | 40 |
| DOL | | 220 - 240 | 3 | 3 | 1 | 40 |
| Pilot duty rating code | | | | | | |
| Duty Code | | | | | | |
| A300 | | | | | | |
| SCCR / Max. fuse rating | | | | | | |
| Conditions of acceptability | | | | | | |
| These devices are suitable for use on circuits capable of delivering not more than 5kA rms symmetrical amperes, 600V ac max. when protected by Class RK1 fuses. | | | | | | |
| Temp. rating of wire | | | | | | |
| Temperature rating (°C) | | | Current (A) Text | | | |
| 60 - 75 | | | -- Use copper wire only | | | |
| General Use | | | | | | |
| AC / DC | 電圧 (V) | Current (A) | 相数 | 極数 | No. of contacts in series | |
| AC | 150 | 16 | 1 | 2 | 1 | |


| General Use | | | | | | |
|---|-----------|-------------------------|------------------|---------------------------------------|---------------------------|---|
| AC / DC | 電圧 (V) | Current (A) | 相数 | 極数 | No. of contacts in series | |
| AC | 150 | 16 | 3 | 3 | 1 | |
| AC | 300 | 10 | 1 | 2 | 1 | |
| AC | 300 | 10 | 3 | 3 | 1 | |
| CSA | | | | | | |
| Nominal Voltage | | | | | | |
| | | | 電圧 (V) AC / DC | | | |
| | | | 300 AC | | | |
| 定格絶縁電圧 Ui | | | | | | |
| | | | 電圧 (V) AC / DC | | | |
| | | | 300 AC | | | |
| 定格熱電流 | | | | | | |
| | | Current (A) | 周囲温度 (°C) 備考 | | | |
| | | 16 | 0 - 40 -- | | | |
| Horsepower rating | | | | | | |
| Across-the-Line Motor Starting | 電圧 (V) | 相数 | 極数 | Power (HP) | Ambient temperature [°C] | |
| DOL | 110 - 120 | 1 | 2 | 0,50 | 40 | |
| DOL | 220 - 240 | 1 | 2 | 1 | 40 | |
| DOL | 277 - 277 | 1 | 2 | 2 | 40 | |
| DOL | 110 - 120 | 3 | 3 | 1,50 | 40 | |
| DOL | 220 - 240 | 3 | 3 | 3 | 40 | |
| Pilot duty rating code | | | | | | |
| Duty Code | | | | | | |
| A300 | | | | | | |
| SCCR / Max. fuse rating | | | | | | |
| Conditions of acceptability | | | | | | |
| These devices are suitable for use on circuits capable of delivering not more than 5kA rms symmetrical amperes, 600V ac max. when protected by Class RK1 fuses. | | | | | | |
| Temp. rating of wire | | | | | | |
| | | Temperature rating (°C) | Current (A) Text | | | |
| | | 75 | -- -- | | | |
| General Use | | | | | | |
| AC / DC | 電圧 (V) | Current (A) | 相数 | 極数 | No. of contacts in series | |
| AC | 150 | 16 | 1 | 1 | 1 | |
| AC | 300 | 10 | 1 | 1 | 1 | |
| AC | 300 | 10 | 3 | 3 | 1 | |
| GENERAL TECHNICAL INFORMATION | | | | | | |
| 電線サイズ | | | | | | |
| 電線種別 | 最小値 / 最大値 | 1端子当たりの配線数 | | 断面積 (mm ²) or (AWG/kcmil) | 電線材料 | |
| 単線 | 最小 | 1 | | 0.5mm ² | 銅 | |
| 単線 | 最小 | 2 | | 0.5mm ² | 銅 | |
| 細撚線 | 最小 | 1 | | 0.75mm ² | 銅 | |
| 細撚線 | 最小 | 2 | | 0.75mm ² | 銅 | |
| 細撚線 | 最大 | 2 | | 2.5mm ² | 銅 | |
| 細撚線 | 最大 | 2 | | AWG 14 | 銅 | |
| 単線または荒撚線 | 最大 | 2 | | AWG 12 | 銅 | |
| 単線または荒撚線 | 最大 | 2 | | 2.5mm ² | 銅 | |
| DIN46228規格フェール適用の細撚線 | 最小 | 1 | | 0.5mm ² | 銅 | |
| DIN46228規格フェール適用の細撚線 | 最大 | 2 | | 2.5mm ² | 銅 | |
| DIN46228規格フェール適用の細撚線 | 最小 | 2 | | 0.5mm ² | 銅 | |
| Stripping length | | | | | | |
| Length (mm) -- | | | | | | |
|  | | | | | | |
| Recommended screw driver | | | | | | |
| Type of screw driver | | | Value | | | |
| Cross Screwdriver | | | PH1 | | | |
| Slot screwdriver according to DIN 5264 | | | 0,8x4 | | | |
| 端子ネジ締付トルク | | | | | | |
| | | | 締付トルク (Nm) | | 締付トルク (lb-in) | |
| | | | 0,60 | | 5 | |
| 認証 | | | | | | |
| 仕様 | | | | | | マーキング |
| EAC | | | | | |  |
| CEマーキング | | | | | |  |
| UK Directives | | | | | |  |
| CSA C.22.2 No.14 | | | | | |  |
| GB/T14048.3 | | | | | |  |
| 注意事項 | | | | | | |
| 備考 | | | | | | |
| - 錫メッキ/銀メッキの有無に関わらず、配線には銅線のみを使用してください。なお、接続前の電線の端を半田付け処理することはお控えください。 | | | | | | |

注意事項


備考

- 工場出荷時にはジャンパー部品が接続されている端子の端子ネジにつきましてはジャンパー部品が脱落しない程度に、仮締め状態にて出荷させていただいております。ご使用時に端子ネジを緩める際には、工場出荷時に接続されたジャンパー部品が脱落していないこと、および、全てのジャンパー接続が正しく配線されていることを確認して下さい。
- ご使用時に配線接続される際には全ての端子ネジを規定トルクで締め付けて下さい。
- 選択された取り付け方法の保護等級は、オプションの追加部品を使用する場合に変更されることがあります。
- 接点に潤滑剤を塗布したり、表面処理をしたりしないでください。
- スイッチの取り付け、接続、操作の設定は、技術的に認められた規則に従って、有資格者のみが行うことができます。
- スイッチの設置後、端子間の間隔は、適用される規格の要件を満たすのに十分なものでなければなりません。

Waste Electrical & Electronic Equipment (WEEE)

| Picture name | Description |
|--|--|
|  | Do not throw in the trash as care must be taken to ensure environmentally sound disposal and recycling. Please either use an environmentally friendly waste disposal company; return to the supplier for disposal; or return direct to the manufacturer, Kraus & Naimer. You can find local Kraus & Naimer offices at www.krausnaimer.com |

Proposition 65

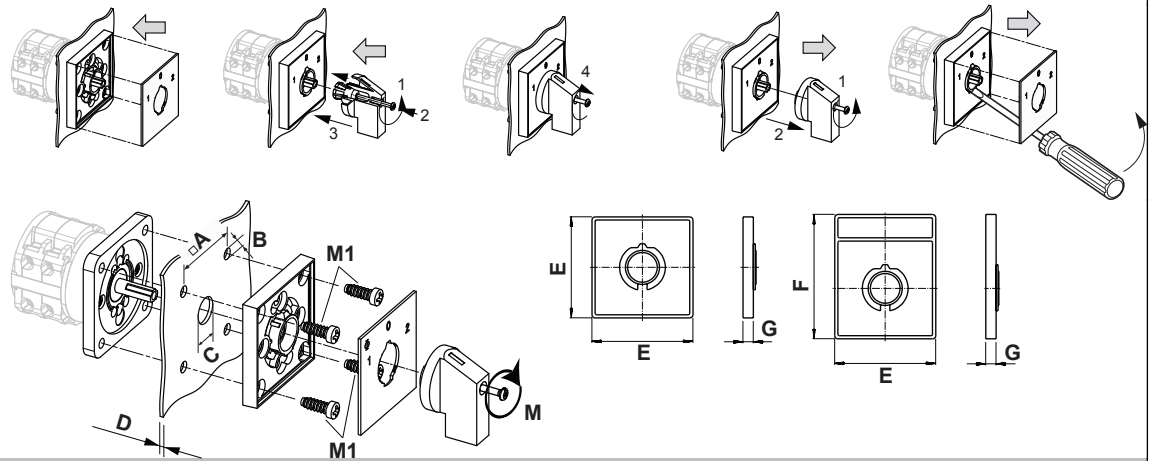
| Picture name | Description |
|--|---|
|  | WARNING: This product can expose you to chemicals including nickel and lead, which is known to the State of California to cause cancer. For more information go to www.P65Warnings.ca.gov . |

Classification Contact: Rigid contact bridge

Classification Contact Mat: Silver

Classification Terminal: Screw terminal

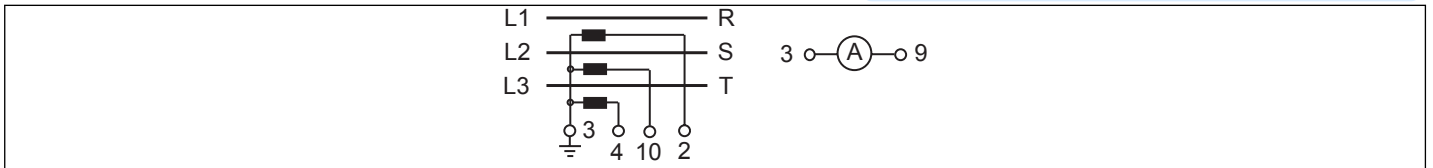
Mounting-E



| | | |
|----------------------|---|-----------------|
| IP - Code front side | | IP40 |
| Stages | | 1,00 - 12,00 |
| A | □ | 36,00 mm |
| B | ∅ | 5,00 mm |
| C | ∅ | 8,00 - 19,00 mm |
| D | H | <= 4,00 mm |
| E | H | 48,00 mm |
| F | H | 59,00 mm |
| G | H | 6,70 mm |
| M | ⌀ | 0,50 Nm |
| M1 | ⌀ | 0,90 Nm |


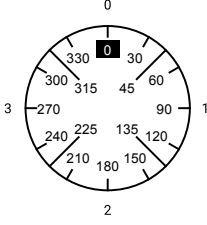
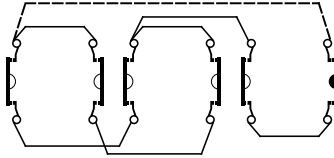
Wiring diagram

CG8.A048.E



Switch program

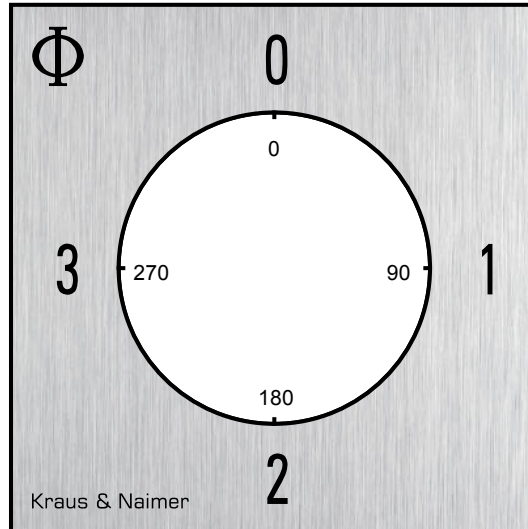
CG8.A048.E

|  Kraus & Naimer | | CG8 | | A048 | | E | | Page 1 of 1 | | | | | |
|---|-----|---|---|------|---|----|----|-------------|----|----|----|----|----|
| | | 1 | 3 | 5 | 7 | 9 | 11 | 13 | 15 | 17 | 19 | 21 | 23 |
| Face Plate  | |  | | | | | | | | | | | |
| Switching Angle <input type="text" value="90"/> Total switching Angle <input type="text" value="360"/> | | 2 | 4 | 6 | 8 | 10 | 12 | 14 | 16 | 18 | 20 | 22 | 24 |
| 0 | 0 | █ | █ | | | | █ | | | | | | |
| | 15 | | | | | | | | | | | | |
| | 30 | | | | | | | | | | | | |
| | 45 | | | | | | | | | | | | |
| | 60 | █ | | █ | | | | | | | | | |
| | 75 | | | | | | | | | | | | |
| 1 | 90 | | | | | | | | | | | | |
| | 105 | | | | | | | | | | | | |
| | 120 | █ | | █ | | | | | | | | | |
| | 135 | | | | | | | | | | | | |
| | 150 | | | | | | █ | | █ | | | | |
| | 165 | | | | | | | | | | | | |
| 2 | 180 | | | | | | | | | | | | |
| | 195 | | | | | | | | | | | | |
| | 210 | | | | | | | █ | | █ | | | |
| | 225 | | | | | | | | | | | | |
| | 240 | | █ | | | | | | | | | | |
| | 255 | | | | | | | | | | | | |
| 3 | 270 | | | | | | | | | | | | |
| | 285 | | | | | | | | | | | | |
| | 300 | | █ | | | | | | | | | | |
| | 315 | | | | | | | | | | | | |
| | 330 | | | | | | | | | | | | |
| | 345 | | | | | | | | | | | | |

Version: 44

Face plate

S0.F059/A1B.PEL

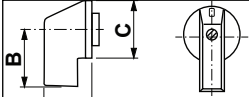


HANDLES

Designation: SOC.G251
 Handle colour: "1" black

GENERAL TECHNICAL INFORMATION

| Recommended screw driver | |
|--|-------|
| Type of screw driver | Value |
| Cross Screwdriver | PH1 |
| Slot screwdriver according to DIN 5264 | 0,8x4 |



| | | | | | |
|---|----------|---|----------|---|----------|
| A | 22,00 mm | B | 23,80 mm | C | 27,60 mm |
|---|----------|---|----------|---|----------|