



Sample image





Datasheet

Article number: 70007568

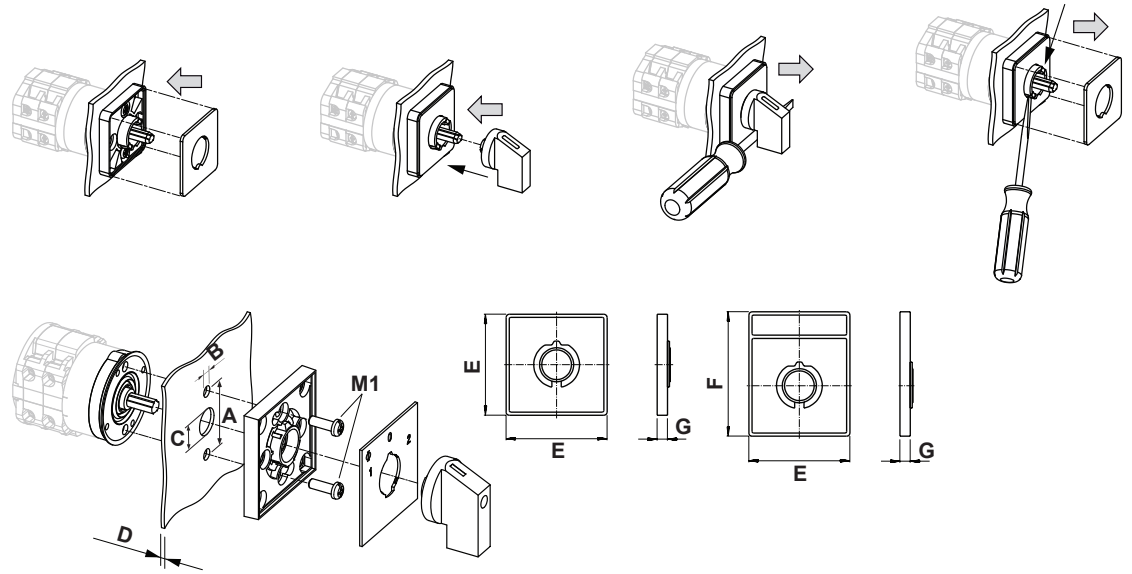
Designation: CA4.A291.EF

Description: Switch

IEC 60947-3 EN 60947-3, VDE 0660 Teil 107							
Rated insulation voltage Ui							
Voltage (V) AC / DC							
440 AC / DC							
Rated uninterrupted current Iu/Ith							
Current (A)	Ambient temperature (°C)	Peak temperature (°C)	additional requirements				
10	55	60	Ambient temperature +55°C during 24 hours with peaks up to +60°C				
Rated operational current Ie							
Utilization category							
Voltage (V)						Current (A)	
AC-15						2,50	
AC-15						1,50	
Rated operational power							
Utilization category	Voltage (V)	No. of phases	No. of poles	Power (kW)			
AC-3	220 - 240	3	3	1,50			
AC-3	380 - 440	3	3	2,20			
AC-3	220 - 240	1	2	0,55			
AC-3	380 - 440	1	2	0,75			
AC-23A	220 - 240	3	3	1,80			
AC-23A	380 - 440	3	3	3			
AC-23A	220 - 240	1	2	0,75			
AC-23A	380 - 440	1	2	1,10			
Max. Fuse rating IEC							
Fuse characteristic						No. of Fuses	Current (A)
gG						1	10
UL60947-4-1, UL508							
Nominal Voltage							
Voltage (V) AC / DC							
300 AC							
Rated insulation voltage Ui							
Voltage (V) AC / DC							
300 AC							
Rated thermal current							
Current (A)							
10							
Ambient temperature (°C) Additional Text							
0 - 40 -							
Horsepower rating							
Across-the-Line Motor Starting							
	Voltage (V)	No. of phases	No. of poles	Power (HP)	Ambient temperature [°C]		
DOL	110 - 120	1	2	0,33	40		
DOL	220 - 240	1	2	0,75	40		
DOL	277 - 277	1	2	0,75	40		
DOL	110 - 120	3	3	0,75	40		
DOL	220 - 240	3	3	1	40		
Pilot duty rating code							
Duty Code							
A300							
Temp. rating of wire							
Temperature rating (°C)							
60 - 75							
Current (A) Text							
-- Use copper wire only							
General Use							
AC / DC	Voltage (V)	Current (A)	No. of phases	No. of poles	No. of contacts in series		
AC	120	10	1	1	1		
AC	277	10	1	2	1		
AC	277	10	3	3	1		
CSA							
Nominal Voltage							
Voltage (V) AC / DC							
300 AC							
Rated insulation voltage Ui							
Voltage (V) AC / DC							
300 AC							

Rated thermal current						
Current (A)		Ambient temperature (°C)		Additional Text		
10		0 - 40		-		
Horsepower rating						
Across-the-Line Motor Starting		Voltage (V)	No. of phases	No. of poles	Power (HP)	Ambient temperature [°C]
DOL		110 - 120	1	2	0,33	40
DOL		220 - 240	1	2	0,75	40
DOL		277 - 277	1	2	0,75	40
DOL		110 - 120	3	3	0,75	40
DOL		220 - 240	3	3	1	40
Pilot duty rating code						
Duty Code						
A300						
Temp. rating of wire						
Temperature rating (°C)		Current (A) Text				
75		- only				
General Use						
AC / DC	Voltage (V)	Current (A)	No. of phases	No. of poles	No. of contacts in series	
AC	120	10	1	1	1	
AC	277	10	1	2	1	
GENERAL TECHNICAL INFORMATION						
Size of conductor						
composition of conductor	Min. / Max. value	No. of conductor per terminal	Cross section (mm ²) or (AWG/kcmil)		Material of the wire	
Solid wire	Min.	1	0.5mm ²		Copper	
Solid wire	Min.	2	0.5mm ²		Copper	
Flexible wire	Min.	1	0.75mm ²		Copper	
Flexible wire	Min.	2	0.75mm ²		Copper	
Flexible wire	Max.	2	AWG 16		Copper	
Flexible wire	Max.	2	1.5mm ²		Copper	
Single-core or stranded wire	Max.	2	AWG 14		Copper	
Single-core or stranded wire	Max.	2	1.5mm ²		Copper	
Flexible wire with ferrule according to DIN 46228	Min.	1	0.5mm ²		Copper	
Flexible wire with ferrule according to DIN 46228	Max.	2	1mm ²		Copper	
Flexible wire with ferrule according to DIN 46228	Min.	2	0.5mm ²		Copper	
Stripping length						
Length (mm) -						
						
Recommended screw driver						
Type of screw driver	Value					
Cross Screwdriver	PH1					
Slot screwdriver according to DIN 5264	0,6x3,5					
Tightening torque of screws						
tightening torque (Nm)				tightening torque (lb-in)		
0,40				3,50		
Approbations						
Specification						Marking
CE marking						
UK Directives						
CSA C.22.2 No.14						
General Information						
Text						
<ul style="list-style-type: none"> - Alleen koperleidingen met of zonder vertinde/verzilverde draden (per draad) gebruiken. Het nadien vertinnen van de uiteinden is niet toegestaan. - Terminals with factory fitted jumper links are tightened during production for loss prevention. When opening the terminal clamps, make sure that no factory fitted links get lost and that all wire connections are properly seated. - After wiring, ALL terminal screws must be tightened to the specified torque values. - Het gebruik van een extra apparaat kan de beschermingsklasse van de gekozen bouwvorm beïnvloeden. - Do not lubricate or treat contacts. - Switches may only be mounted, connected and set into operation by qualified persons according to the accepted rules of technology. - After installation of the switches the spacings between the terminals must be sufficient to fulfill the requirement of the applicable standards. 						
Waste Electrical & Electronic Equipment (WEEE)						
Picture name	Description					
	Do not throw in the trash as care must be taken to ensure environmentally sound disposal and recycling. Please either use an environmentally friendly waste disposal company; return to the supplier for disposal; or return direct to the manufacturer, Kraus & Naimer. You can find local Kraus & Naimer offices at www.krausnaimer.com					
Proposition 65						
Picture name	Description					
	WARNING: This product can expose you to chemicals including nickel and lead, which is known to the State of California to cause cancer. For more information go to www.P65Warnings.ca.gov .					
Classification Contact: Rigid contact bridge						
Classification Contact Mat: Silver						
Classification Terminal: Screw terminal						

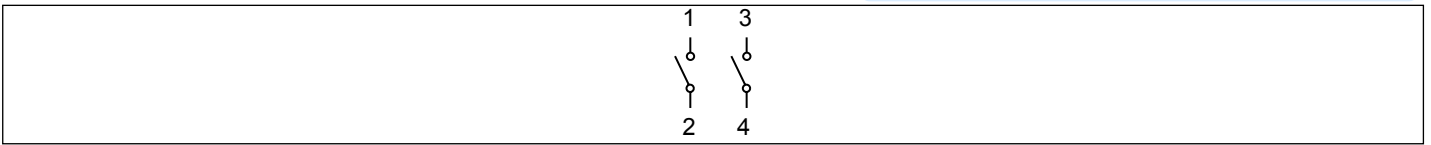
Mounting-EF



IP - Code front side	IP66, IP67, IP69k
Stages	1,00 - 9,00
A	H 20,00 mm
B	Ø 3,20 mm
C	Ø 8,00 - 11,00 mm
D	H ≤ 4,00 mm
E	H 30,00 mm
F	H 39,00 mm
G	H 5,50 mm
M1	↺ 0,40 Nm


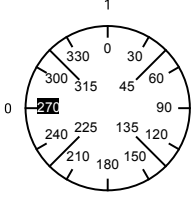
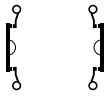
Wiring diagram

CA4.A291.EF



Switch program

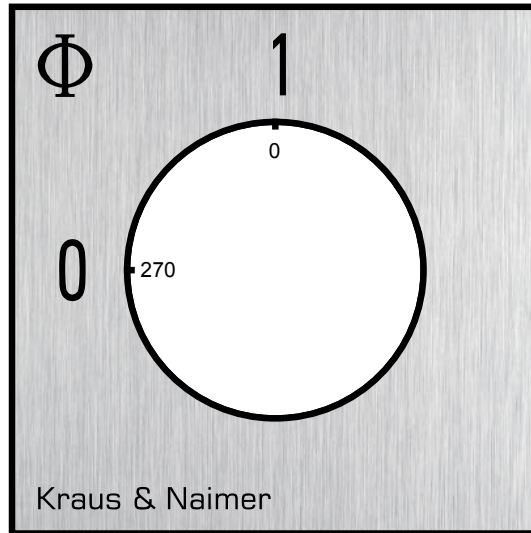
CA4.A291.EF

 Kraus & Naimer		CA4				A291								Page 1 of 1			
		1	3	5	7	9	11	13	15	17	19	21	23				
Face Plate 																	
Switching Angle <input type="text" value="90"/> Total switching Angle <input type="text" value="90"/>		2	4	6	8	10	12	14	16	18	20	22	24				
0	270																
	285																
	300																
	315																
	330	█	█														
	345																
1	0																
	15																
	30																
	45																
	60																
	75																
	90																
	105																
	120																
	135																
	150																
	165																
	180																
	195																
	210																
	225																
	240																
	255																
												Jumpers					
												1 ●	●3	4 ●	●2		
												5 ○	○7	8 ○	○6		
												9 ○	○11	12 ○	○10		
												13 ○	○15	16 ○	○14		
												17 ○	○19	20 ○	○18		
												21 ○	○23	24 ○	○22		
												25 ○	○27	28 ○	○26		
												29 ○	○31	32 ○	○30		
												33 ○	○35	36 ○	○34		
												37 ○	○39	40 ○	○38		
												41 ○	○43	44 ○	○42		
												45 ○	○47	48 ○	○46		

Version: 96

Face plate

S00.F056/A1B.PE



HANDLES

Designation: S00.G251
Handle colour: "1" black

