



Sample image

## Datasheet

**Article number:** 70009858

**Designation:** KG10B.T102/01.E

**Description:** Switch Global Disconnecter

<b>IEC 60947-3 EN 60947-3, VDE 0660 Teil 107</b>						
<b>Rated insulation voltage Ui</b>						
			Voltage (V) AC / DC			
			690 AC			
<b>Rated uninterrupted current Iu/Ith</b>						
Current (A)	Ambient temperature (°C)		Peak temperature (°C)		additional requirements	
20	50		55		Ambient temperature +50°C during 24 hours with peaks up to +55°C	
<b>Rated operational current Ie</b>						
Utilization category			Voltage (V)		Current (A)	
AC-15			220 - 240		6	
AC-15			380 - 440		4	
<b>Rated operational power</b>						
Utilization category	Voltage (V)	No. of phases	No. of poles	Power (kW)		
AC-3	220 - 240	3	3	2,20		
AC-3	380 - 440	3	3	3,70		
AC-3	660 - 690	3	3	3,70		
AC-3	220 - 240	1	2	1,10		
AC-3	380 - 440	1	2	1,50		
AC-23A	220 - 240	3	3	3		
AC-23A	380 - 440	3	3	5,50		
AC-23A	660 - 690	3	3	5,50		
AC-23A	220 - 240	1	2	1,50		
AC-23A	380 - 440	1	2	2,20		
<b>Max. Fuse rating IEC</b>						
Fuse characteristic			No. of Fuses		Current (A)	
gG			1		20	
<b>UL60947-4-1 , UL508</b>						
<b>Nominal Voltage</b>						
			Voltage (V) AC / DC			
			300 AC			
<b>Rated insulation voltage Ui</b>						
			Voltage (V) AC / DC			
			300 AC			
<b>Rated thermal current</b>						
		Current (A)	Ambient temperature (°C)		Additional Text	
		20	0 - 40		-	
		20	0 - 40		-	
<b>Horsepower rating</b>						
<i>Across-the-Line Motor Starting</i>		Voltage (V)	No. of phases	No. of poles	Power (HP)	Ambient temperature [°C]
DOL		110 - 220	1	2	0,50	40
DOL		220 - 240	1	2	1	40
DOL		277 - 277	1	2	1	40
DOL		110 - 120	3	3	1	40
DOL		220 - 240	3	3	2	40
<b>Pilot duty rating code</b>						
Duty Code						
A300						
<b>SCCR / Max. fuse rating</b>						
<i>Conditions of acceptability</i>						
These devices are suitable for use on circuits capable of delivering not more than 5kA rms symmetrical amperes, 300V ac max. when protected by Class J fuses.						
<b>Temp. rating of wire</b>						
			Temperature rating (°C)	Current (A)		Text
			60 - 75			- Use copper wire only
<b>Connecting instructions</b>						
<i>Markings</i>						
Break all lines.						
For use on a flat surface of a type 1 enclosure.						
<b>General Use</b>						
AC / DC	Voltage (V)	Current (A)	No. of phases	No. of poles	No. of contacts in series	
AC	277	20	1	1	1	

General Use					
AC / DC	Voltage (V)	Current (A)	No. of phases	No. of poles	No. of contacts in series
AC	300	20	1	2	1
AC	300	20	3	3	1

**General Information**

*Text*

- The operating handle and position indicating means to be used with these manual motor controllers should be provided from the manufacturer, or the operating handle and position indicating means to be used should have been previously evaluated in combination with the manual motor controllers.

- When intended for use as a motor disconnecter the device shall be provided with a method of being locked in the OFF-position.

**CSA**

Nominal Voltage	
Voltage (V)	AC / DC
300	AC

Rated insulation voltage Ui	
Voltage (V)	AC / DC
300	AC

Rated thermal current			
Current (A)	Ambient temperature (°C)	Additional Text	
20	0 - 40	-	
20	0 - 40	-	

Horsepower rating						
Across-the-Line Motor Starting	Voltage (V)	No. of phases	No. of poles	Power (HP)	Ambient temperature [°C]	
DOL	110 - 220	1	2	0,50	40	
DOL	220 - 240	1	2	1	40	
DOL	277 - 277	1	2	1	40	
DOL	110 - 120	3	3	1	40	
DOL	220 - 240	3	3	2	40	


Pilot duty rating code	
Duty Code	
A300	

Temp. rating of wire		
Temperature rating (°C)	Current (A)	Text
75	-	-

General Use					
AC / DC	Voltage (V)	Current (A)	No. of phases	No. of poles	No. of contacts in series
AC	277	20	1	1	1
AC	277	20	3	3	1




**GENERAL TECHNICAL INFORMATION**

Size of conductor				
composition of conductor	Min. / Max. value	No. of conductor per terminal	Cross section (mm <sup>2</sup> ) or (AWG/kcmil)	Material of the wire
Solid wire	Min.	1	0.5mm <sup>2</sup>	Copper
Solid wire	Min.	2	0.5mm <sup>2</sup>	Copper
Flexible wire	Min.	1	0.75mm <sup>2</sup>	Copper
Flexible wire	Min.	2	0.75mm <sup>2</sup>	Copper
Flexible wire	Max.	1	AWG 12	Copper
Flexible wire	Max.	1	2.5mm <sup>2</sup>	Copper
Single-core or stranded wire	Max.	1	AWG 12	Copper
Single-core or stranded wire	Max.	1	2.5mm <sup>2</sup>	Copper
Flexible wire with ferrule according to DIN 46228	Max.	1	2.5mm <sup>2</sup>	Copper
Flexible wire with ferrule according to DIN 46228	Min.	1	0.5mm <sup>2</sup>	Copper
Flexible wire with ferrule according to DIN 46228	Min.	2	0.5mm <sup>2</sup>	Copper

Stripping length	
Length (mm)	
8	

Recommended screw driver	
Type of screw driver	Value
Cross Screwdriver	PH1
Slot screwdriver according to DIN 5264	0,8x4

Tightening torque of screws		
	tightening torque (Nm)	tightening torque (lb-in)
	0,60	5

Approbations	
Specification	Marking
CE marking	
UK Directives	
CSA C.22.2 No.14	

**General Information**

*Text*

- Alleen koperleidingen met of zonder vertinde/verzilverde draden (per draad) gebruiken. Het nadien vertinnen van de uiteinden is niet toegestaan.

- Terminals with factory fitted jumper links are tightened during production for loss prevention. When opening the terminal clamps, make sure that no factory fitted links get lost and that all wire connections are properly seated.


## General Information

### Text

- After wiring, ALL terminal screws must be tightened to the specified torque values.
- Het gebruik van een extra apparaat kan de beschermingsklasse van de gekozen bouwvorm beïnvloeden.
- Do not lubricate or treat contacts.
- Switches may only be mounted, connected and set into operation by qualified persons according to the accepted rules of technology.
- After installation of the switches the spacings between the terminals must be sufficient to fulfill the requirement of the applicable standards.


## Waste Electrical & Electronic Equipment (WEEE)

### Picture name Description

 Do not throw in the trash as care must be taken to ensure environmentally sound disposal and recycling. Please either use an environmentally friendly waste disposal company, return to the supplier for disposal, or return direct to the manufacturer, Kraus & Naimer. You can find local Kraus & Naimer offices at [www.krausnaimer.com](http://www.krausnaimer.com)

## Proposition 65

### Picture name Description

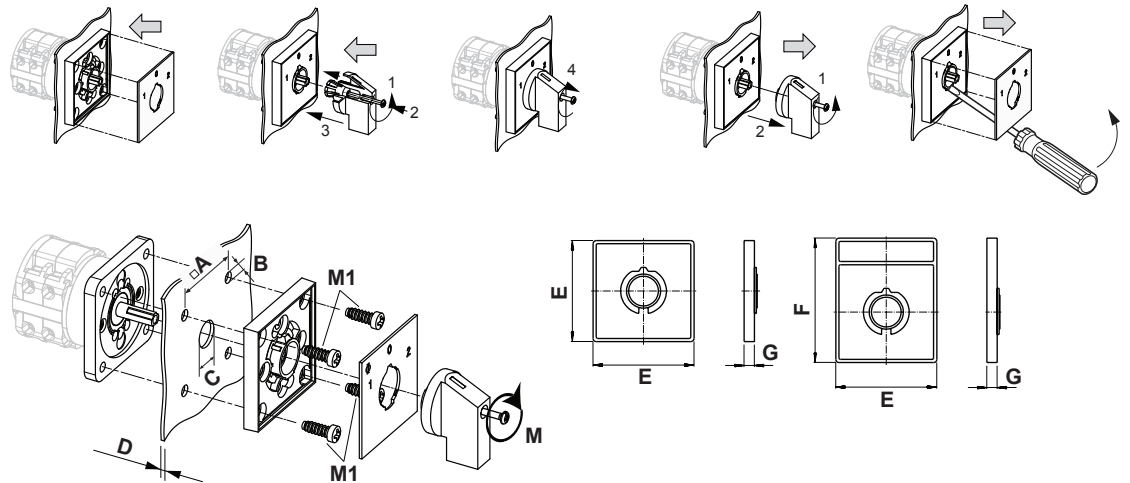
 WARNING: This product can expose you to chemicals including nickel and lead, which is known to the State of California to cause cancer. For more information go to [www.P65Warnings.ca.gov](http://www.P65Warnings.ca.gov).

Classification Contact: Rigid contact bridge

Classification Contact Mat: Silver

Classification Terminal: Screw terminal


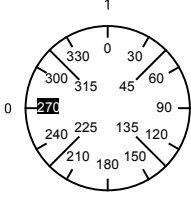
## Mounting-E



IP - Code front side	IP66, IP67
Stages	1,00 - 12,00
A	□ 48,00 mm
B	∅ 5,00 mm
C	∅ 11,00 - 15,00 mm
D	H ≤ 4,00 mm
E	∅ 64,00 mm
F	H 78,00 mm
G	H 7,40 mm
M	↺ 0,70 Nm
M1	↺ 0,90 Nm

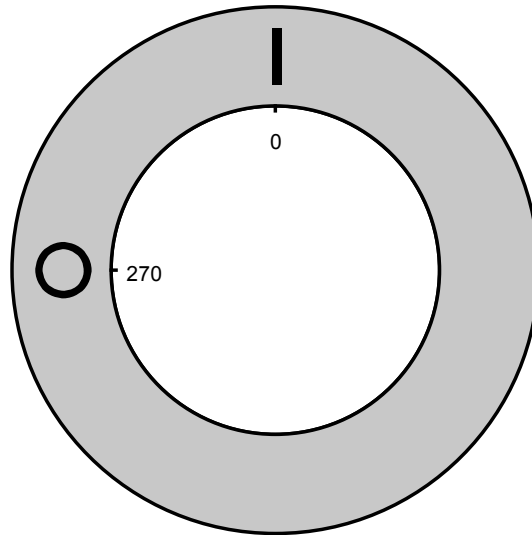
## Switch program

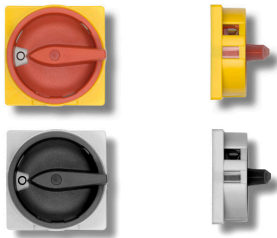
KG10B.T302.E

 Kraus & Naimer		KG10B		T302E		E		Page 1 of 1					
		N	T1										
<b>Face Plate</b> 		1	3	5	7	9	11	13	15	17	19	21	23
		Marking plate: S0D H043 51F											
Switching Angle <input type="text" value="90"/> Total switching Angle <input type="text" value="90"/>		2	4	6	8	10	12	14	16	18	20	22	24
		N	L1										
0		270											
		285											
		300											
		315											
		330											
		345											
1		0	■	■									
		15											
		30											
		45											
		60											
		75											
		90											
		105											
		120											
		135											
		150											
		165											
		180											
		195											
		210											
		225											
		240											
		255											
		<b>Jumpers</b> 1 ●   ●3   4 ●   ●2 5 ○   ○7   8 ○   ○6 9 ○   ○11   12 ○   ○10 13 ○   ○15   16 ○   ○14 17 ○   ○19   20 ○   ○18 21 ○   ○23   24 ○   ○22 25 ○   ○27   28 ○   ○26 29 ○   ○31   32 ○   ○30 33 ○   ○35   36 ○   ○34 37 ○   ○39   40 ○   ○38 41 ○   ○43   44 ○   ○42 45 ○   ○47   48 ○   ○46											
		Version: 2											

**Face plate**

S1.F456/C10.V11H





Sample image

## PADLOCK DEVICE

with F-handle ring

**Designation:** S1.V840G/A71/A1

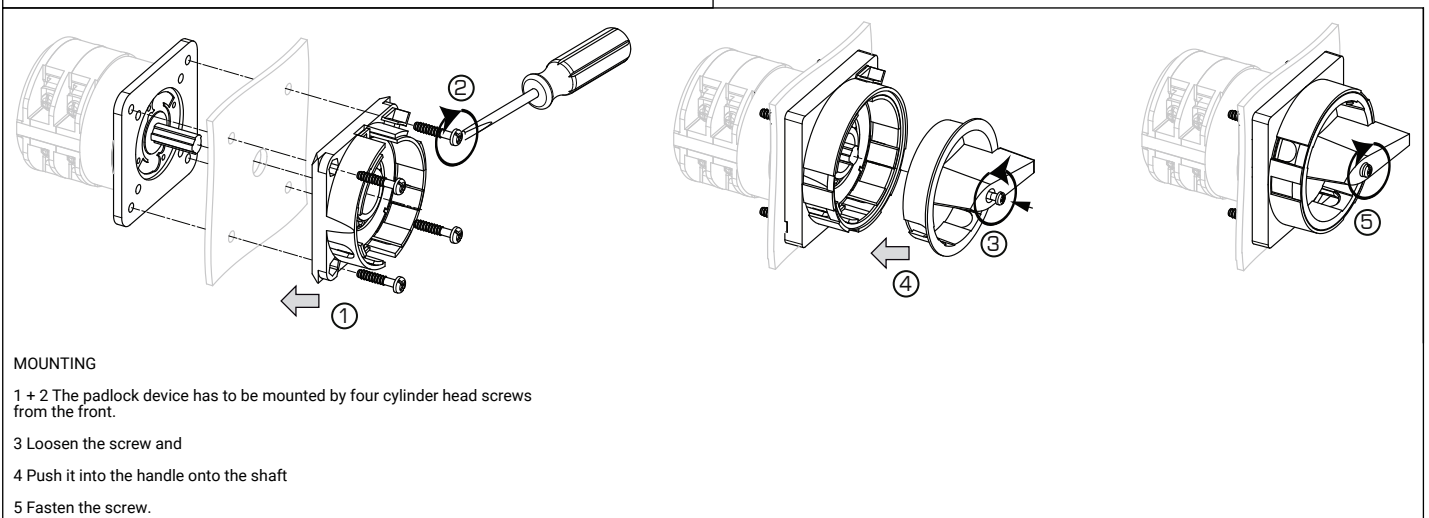
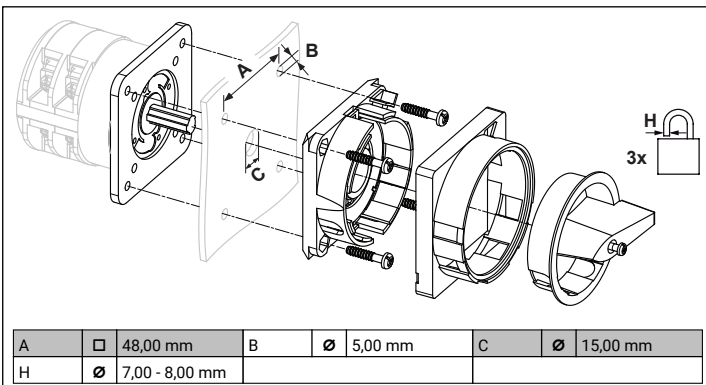
**Colour of F-handle ring:** "A" black

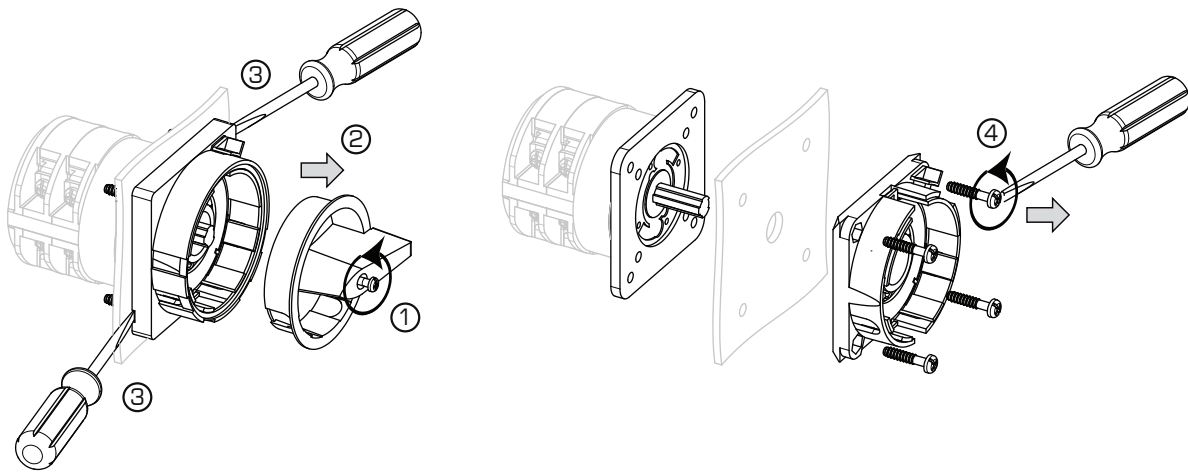
**Colour of face ring:** "7" electro-grey

**Locking position:** "1" at 270° (1x90°)

**Type of mounting:** "A" for type of mounting GK (Rose)

**Type of mounting:** "A" for type of mounting E  
**Switch type:** "1" for C-switches and for KG10.





1 Loose handle screw

2 remove handle.

3 Insert a proper auxiliary tool at those points of the frame of the device which are marked by a screw driver on the drawing and remove the frame.

4 Fixing screws can be loosen now.