

Sample image





## Datasheet

**Article number:** 70011202

**Designation:** KG100.T303.E

**Description:** Switch Local Disconnecter

IEC 60947-3 EN 60947-3, VDE 0660 Teil 107						
<b>Rated insulation voltage Ui</b>						
Voltage (V) AC / DC						
690 AC						
<b>Rated uninterrupted current Iu/Ith</b>						
Current (A)	Ambient temperature (°C)	Peak temperature (°C)	additional requirements			
100	50	55	Ambient temperature +50°C during 24 hours with peaks up to +55°C			
<b>Rated operational current Ie</b>						
Utilization category						
AC-32A						
Voltage (V)						
20 - 400						
<b>Rated operational power</b>						
Utilization category	Voltage (V)	No. of phases	No. of poles	Power (kW)		
AC-3	220 - 240	3	3	18,50		
AC-3	380 - 440	3	3	30		
AC-3	660 - 690	3	3	22		
AC-23A	220 - 240	3	3	22		
AC-23A	380 - 440	3	3	37		
AC-23A	660 - 690	3	3	30		
<b>Max. Fuse rating IEC</b>						
Fuse characteristic						
gG						
No. of Fuses						
1						
Current (A)						
100						
<b>UL60947-4-1 , UL508</b>						
<b>Nominal Voltage</b>						
Voltage (V) AC / DC						
600 AC						
<b>Rated insulation voltage Ui</b>						
Voltage (V) AC / DC						
600 AC						
<b>Rated thermal current</b>						
Current (A)						
100						
Ambient temperature (°C)						
0 - 40 -						
<b>Horsepower rating</b>						
Across-the-Line Motor Starting	Voltage (V)	No. of phases	No. of poles	Power (HP)	Ambient temperature [°C]	
DOL	110 - 120	1	2	5	40	
DOL	220 - 240	1	2	15	40	
DOL	277 - 277	1	2	15	40	
DOL	415 - 415	1	2	25	40	
DOL	440 - 480	1	2	30	40	
DOL	550 - 600	1	2	30	40	
DOL	110 - 120	3	3	10	40	
DOL	220 - 240	3	3	25	40	
DOL	415 - 415	3	3	40	40	
DOL	440 - 480	3	3	50	40	
DOL	550 - 600	3	3	50	40	
<b>SCCR / Max. fuse rating</b>						
Conditions of acceptability						
These devices are suitable for use on circuits capable of delivering not more than 10kA rms symmetrical amperes, 600V ac max. when protected by Type RK1 fuses or Circuit Breaker Type SFHA36AT0250, manufactured by General Electric.						
Suitable for use on a circuit capable of delivering not more than 65000 rms symmetrical amperes 600V max., when protected by Class J fuses, 100A max.						
<b>Temp. rating of wire</b>						
Temperature rating (°C)						
75						
Current (A) Text						
-- --						
<b>Connecting instructions</b>						
Markings						
Break all lines.						
<b>General Use</b>						
AC / DC	Voltage (V)	Current (A)	No. of phases	No. of poles	No. of contacts in series	
AC	277	100	1	1	1	
AC	600	100	1	2	1	
AC	600	100	3	3	1	

General Information						
<i>Text</i>						
- The operating handle and position indicating means to be used with these manual motor controllers should be provided from the manufacturer, or the operating handle and position indicating means to be used should have been previously evaluated in combination with the manual motor controllers.						
- When intended for use as a motor disconnecter the device shall be provided with a method of being locked in the OFF-position.						
CSA						
Nominal Voltage						
<i>Voltage (V) AC / DC</i>						
600 AC						
Rated insulation voltage Ui						
<i>Voltage (V) AC / DC</i>						
600 AC						
Rated thermal current						
<i>Current (A)</i>		<i>Ambient temperature (°C) Additional Text</i>				
100		0 - 40 -				
Horsepower rating						
<i>Across-the-Line Motor Starting</i>						
	<i>Voltage (V)</i>	<i>No. of phases</i>	<i>No. of poles</i>	<i>Power (HP)</i>	<i>Ambient temperature [°C]</i>	
DOL	110 - 120	1	2	5	40	
DOL	220 - 240	1	2	15	40	
DOL	277 - 277	1	2	15	40	
DOL	415 - 415	1	2	25	40	
DOL	440 - 480	1	2	30	40	
DOL	550 - 600	1	2	30	40	
DOL	110 - 120	3	3	10	40	
DOL	220 - 240	3	3	25	40	
DOL	415 - 415	3	3	40	40	
DOL	440 - 480	3	3	50	40	
DOL	550 - 600	3	3	50	40	
Temp. rating of wire						
<i>Temperature rating (°C)</i>			<i>Current (A) Text</i>			
75			-- --			
General Use						
<i>AC / DC</i>	<i>Voltage (V)</i>	<i>Current (A)</i>	<i>No. of phases</i>	<i>No. of poles</i>	<i>No. of contacts in series</i>	
AC	277	100	1	1	1	
AC	600	100	1	2	1	
AC	600	100	3	3	1	
GENERAL TECHNICAL INFORMATION						
Size of conductor						
<i>composition of conductor</i>	<i>Min. / Max. value</i>	<i>No. of conductor per terminal</i>		<i>Cross section (mm<sup>2</sup>) or (AWG/kcmil)</i>		<i>Material of the wire</i>
Solid wire	Min.			1 2.5mm <sup>2</sup>		Copper
Flexible wire	Min.			1 4mm <sup>2</sup>		Copper
Flexible wire	Max.			1 35mm <sup>2</sup>		Copper
Flexible wire	Max.			1 AWG 2		Copper
Single-core or stranded wire	Min.			1 AWG 10		Copper
Single-core or stranded wire	Max.			1 AWG 1/0		Copper
Single-core or stranded wire	Max.			1 50mm <sup>2</sup>		Copper
Flexible wire with sleeve	Max.			1 35mm <sup>2</sup>		Copper
Flexible wire with ferrule according to DIN 46228	Min.			1 2.5mm <sup>2</sup>		Copper
Stripping length						
<i>Length (mm) --</i>						
14 						
Recommended screw driver						
<i>Type of screw driver</i>			<i>Value</i>			
Cross Screwdriver			PH2			
Slot screwdriver according to DIN 5264			1,2x6,5			
Tightening torque of screws						
			<i>tightening torque (Nm)</i>		<i>tightening torque (lb-in)</i>	
			3		27	
Approbations						
<i>Specification</i>						<i>Marking</i>
CE marking						
UK Directives						
CSA C.22.2 No.14						
General Information						
<i>Text</i>						
- Alleen koperleidingen met of zonder vertinde/verzilverde draden (per draad) gebruiken. Het nadien vertinnen van de uiteinden is niet toegestaan.						
- Terminals with factory fitted jumper links are tightened during production for loss prevention. When opening the terminal clamps, make sure that no factory fitted links get lost and that all wire connections are properly seated.						
- After wiring, ALL terminal screws must be tightened to the specified torque values.						
- Het gebruik van een extra apparaat kan de beschermingsklasse van de gekozen bouwvorm beïnvloeden.						

## General Information

### Text

- Do not lubricate or treat contacts.
- Switches may only be mounted, connected and set into operation by qualified persons according to the accepted rules of technology.

### Waste Electrical & Electronic Equipment (WEEE)

Picture name Description



Do not throw in the trash as care must be taken to ensure environmentally sound disposal and recycling. Please either use an environmentally friendly waste disposal company; return to the supplier for disposal; or return direct to the manufacturer, Kraus & Naimer. You can find local Kraus & Naimer offices at [www.krausnaimer.com](http://www.krausnaimer.com)

### Proposition 65

Picture name Description



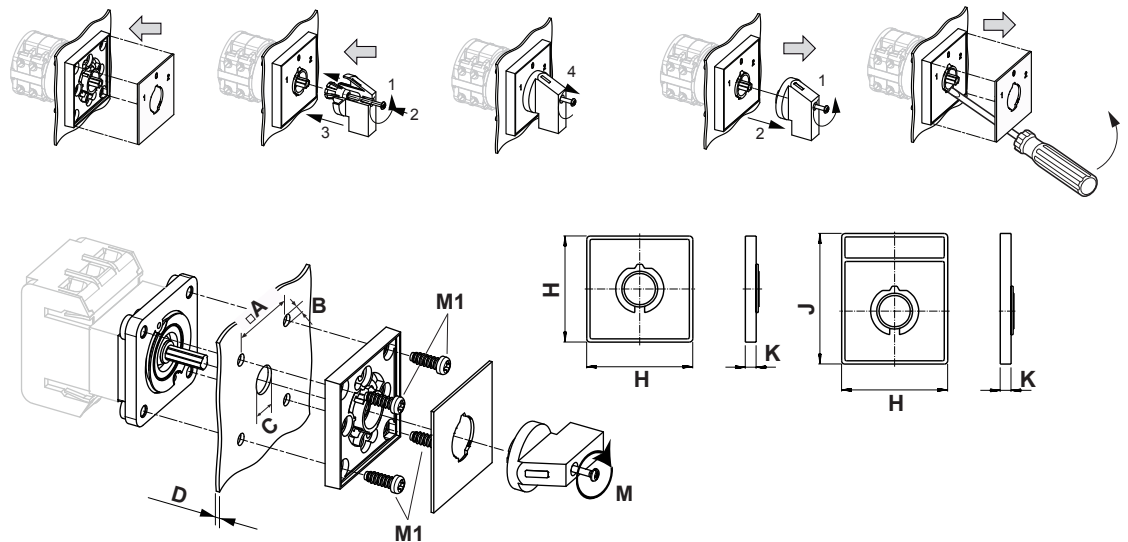
WARNING: This product can expose you to chemicals including nickel and lead, which is known to the State of California to cause cancer. For more information go to [www.P65Warnings.ca.gov](http://www.P65Warnings.ca.gov).

Classification Contact: Rigid contact bridge

Classification Contact Mat: Silver

Classification Terminal: Screw terminal

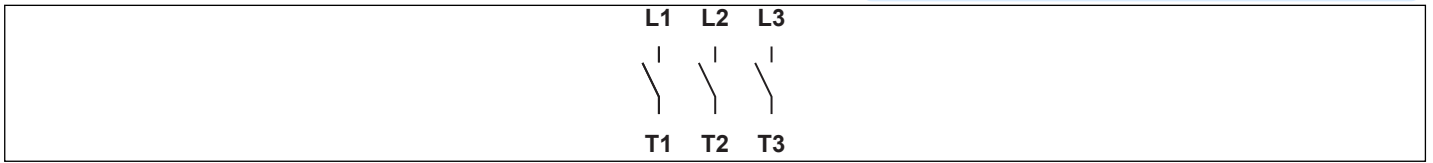
## Mounting-E



IP - Code front side	IP66, IP67
Stages	1,00 - 12,00
A	□ 48,00 mm
B	∅ 5,00 mm
C	∅ 10,00 - 15,00 mm
D	H ≤ 4,00 mm
H	H 64,00 mm
J	H 78,00 mm
K	H 7,40 mm
M	⌀ 0,70 Nm
M1	⌀ 0,90 Nm


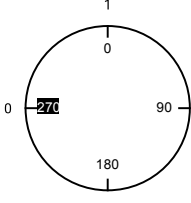
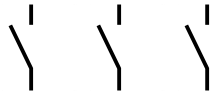
## Wiring diagram

KG100.T303.E



## Switch program

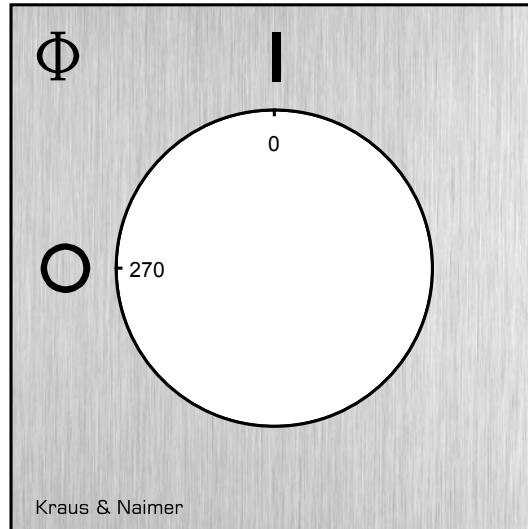
KG100.T303.E

 Kraus & Naimer		<b>KG100</b>	<b>T303</b>	<b>E</b>	<b>Page 1 of 1</b>				
<b>Face Plate</b>		<b>L1</b> 1	<b>L2</b> 3	<b>L3</b> 5	7	9	11	13	15
									
Switching Angle <input type="text" value="90"/>		2	4	6	8	10	12	14	16
Total switching Angle <input type="text" value="90"/>		T1	T2	T3					
0	270								
1	0	█	█	█					
	90								
	180								

Version: 102

**Face plate**

S1.F456/A1B.PEL



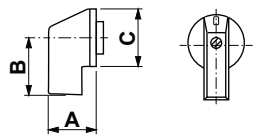
## HANDLES

**Designation:** S1B.G251  
**Handle colour:** "1" black

### GENERAL TECHNICAL INFORMATION

#### Recommended screw driver

Type of screw driver	Value
Cross Screwdriver	PH1
Slot screwdriver according to DIN 5264	0,8x5,5



A	27,00 mm	B	31,80 mm	C	36,00 mm
---	----------	---	----------	---	----------